

Enchanted Circle Association of REALTORS® (ECAR) MLS Areas Map

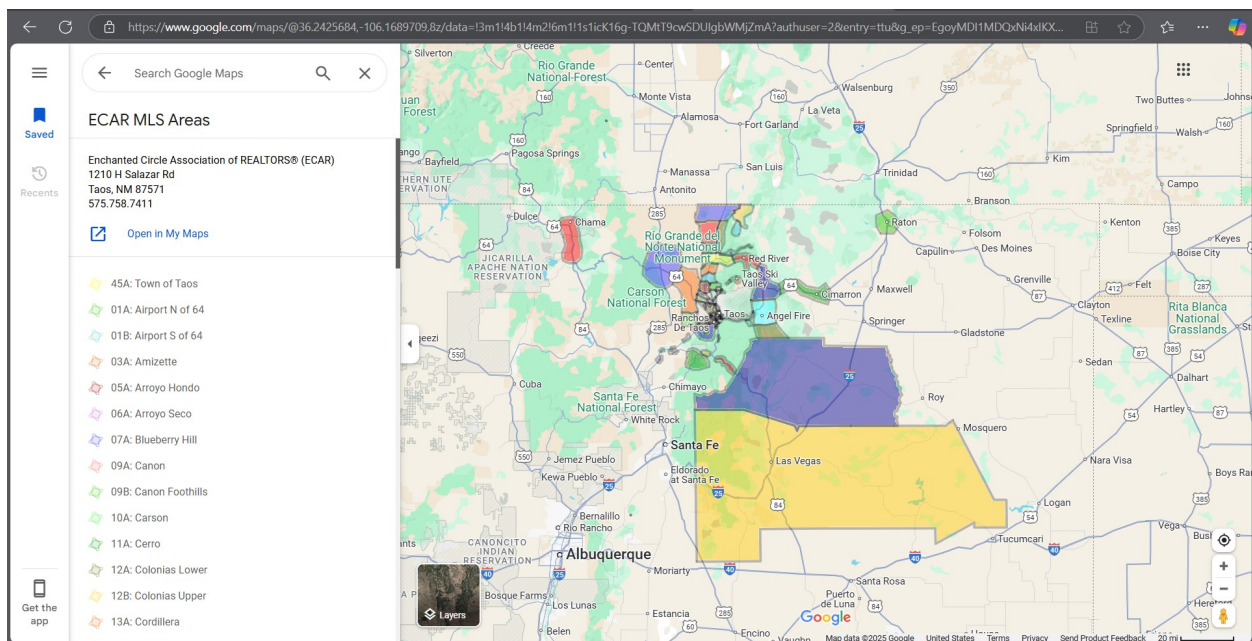
The MLS Areas Map for the Enchanted Circle Association of REALTORS® (ECAR) has been developed and is located on Google maps. The map is interactive, and provides the user with the ability to view in normal map mode, as well as any other feature offered by Google maps. The user may zoom in for a micro view or zoom out for a broad view. The user may also use the street level view on main streets or highways where Google has made street views available.

Click on the following link, or anywhere on the map below to access the interactive Google map:

[ECAR MLS Areas Map](#)

If the above link or clicking on the below map doesn't work, copy and paste the following link into your Internet browser:

<http://maps.google.com/maps/ms?hl=en&ie=UTF8&msa=0&msid=116131154587865526672.00047ea33e736b57b6ed9&source=embed&ll=36.419072,-105.633545&spn=0.399485,0.781403&z=11>



Once you have pulled up the interactive Google map, you may click on any shaded area of the map to see that Area and its approximate boundaries. You may use all the features of a Google map, including zooming in, zooming out, panning in any direction, switching to the Satellite view, the Terrain view, the Traffic view, or the Street Level view, if Google has developed these features for the area of the map you are viewing.

Disclaimer: The areas in this map have been developed for members of the Taos County Association of REALTORS® (TCAR) and are based on property locations and the general access to those properties. These areas are strictly for use by TCAR members, and may have no relation to similarly named neighborhood associations or areas as defined by local governmental agencies.

Enchanted Circle Association of REALTORS® (ECAR)

MLS Defined Areas or Neighborhoods

Taos Proper (close-in immediate area) includes the following areas:

- **Taos** includes the following areas:
 - 01A – Airport North of Hwy 64
 - 01B – Airport South of Hwy 64
 - 07A – Blueberry Hill
 - 09A – Canon
 - 09B – Canon Foothills
 - 12A – Colonias Lower
 - 12B – Colonias Upper
 - 19A – El Prado
 - 23A – Este Es Road
 - 35A – Ranchitos Lower
 - 35B – Ranchitos Upper
 - 45A – Town of Taos
 - 25A – Weimer
- **Arroyo Hondo** (Hwy 522 N of Taos) includes the following areas:
 - 05A – Arroyo Hondo
 - 24A – Hondo Mesa
- **Arroyo Seco** (Hwy 150 NE of Taos) includes the following areas:
 - 06A – Arroyo Seco
 - 16A – Des Montes
 - 21A – El Salto
 - 49A – Valdez
 - 49B – Valdez North
- **Ranchos de Taos** (on south end of Taos) includes the following areas:
 - 13A – Cordillera
 - 14A – Cordovas
 - 43C – Country Club
 - 28A – Llano Mesa
 - 28B – Llano Quemado
 - 29A – Orchard/Catl/GIJ
 - 32A – Pot Creek
 - 36A – Ranchos de Taos
 - 41A – Stakeout
 - 43A – Talpa
 - 43B – Talpa Foothills
 - 52A – Vista Linda
- **Taos Canyon** (Hwy 64 E of Taos) includes the following areas:
 - 44B – Taos Canyon
 - 50A – Valle Escondido
- **Taos Ski Valley** (Hwy 150 NE of Taos) includes the following areas:
 - 03A – Amizette
 - 44A – Taos Ski Valley

East of Taos includes the following areas:

- 04A – Angel Fire
- 06B – Black Lake
- 47B – Cimarron / Ute Park
- 18A – Eagle Nest

West of Taos includes the following areas:

- 10A – Carson
- 11B – Chama
- 46A – Tres Piedras
- 53B – West Gorge Brdg

Southwest of Taos includes the following areas:

- 17A – Dixon
- 22A – Embudo
- 30B – Ojo Caliente
- 31A – Pilar
- 38A – Rinconada
- 51A – Velarde

Southeast of Taos includes the following areas:

- 30A – Mora County
- 29B – Penasco
- 40B – San Miguel County
- 47A – Tres Ritos/Sip
- 48A – Vadito

North of Taos includes the following areas:

- 02A – Amalia
- 08A – Cabresto Canyon
- 11A – Cerro
- 15A – Costilla
- 20A – El Rito/Latir
- 26A – Lama
- 34A – Questa
- 37A – Red River
- 39A – Rio Cost Ski
- 40A – San Cristobal
- 42A – Sunshine

Northeast of Taos includes the following areas:

- 36B – Raton

Other areas include the following areas:

- 54A – Other - Colorado
- 54B – Other - In-State